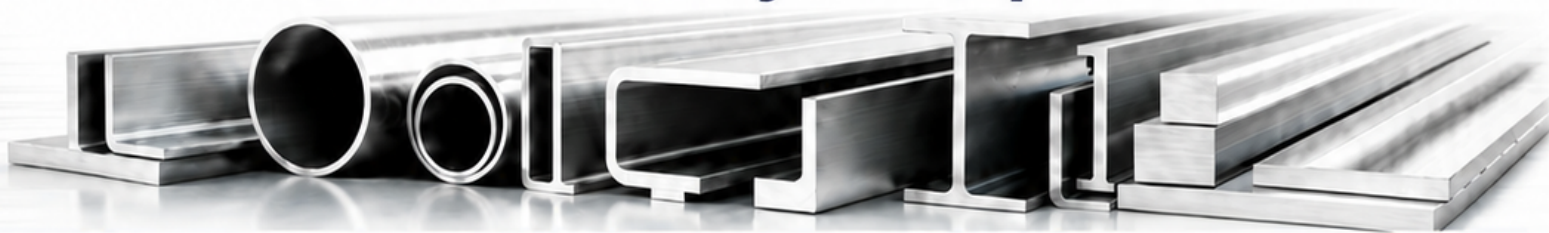


Special Inventory Pricing on Select Ready-to-Ship Items



ROUND TUBE

Item ID	Item Name	Length
316R-100.250-S	316/316L CD.SMLS ROUND TUBE 1.000 X 0.250	240.00
321R-031.035-S	321 CD.SMLS ROUND TUBE 0.312 X 0.035	144.00
61R-100.083-60	6061-T6 DRAWN-SMLS ROUND TUBE 1.000 X 0.083	144.00
63R-050.049-T5	6063-T52 EXTRUDED ROUND TUBE 0.500 X 0.049	240.00
63R-063.049-T5	6063-T52 EXTRUDED ROUND TUBE 0.625 X 0.049	120.00
86R-150.250-H32	5086-H32 DRAWN-SMLS ROUND TUBE 1.500 X 0.250	240.00
86R-300.250-H32	5086-H32 DRAWN-SMLS ROUND TUBE 3.000 X 0.250	240.00
86R-300.375-H32	5086-H32 DRAWN-SMLS ROUND TUBE 3.000 X 0.375	144.00
86R-300.375-H32	5086-H32 DRAWN-SMLS ROUND TUBE 3.000 X 0.375	240.00

DRAWN SEAMLESS PIPE

Item ID	Item Name	Length
86P-075.080-H32	5086-H32 DRAWN-SMLS 0.750" SCH.80 1.050 X 0.154	240.00
86P-100.040-H32	5086-H32 DRAWN-SMLS 1.000" SCH.40 1.315 X 0.133	240.00
86P-125.080-H32	5086-H32 DRAWN-SMLS 1.250" SCH.80 1.660 X 0.109	240.00
86P-500.040-H32	5086-H32 DRAWN-SMLS 5.000" SCH.40 5.563 X 0.328	240.00
86P-600.040-H32	5086-H32 DRAWN-SMLS 6.000" SCH.40 6.625 X 0.280	240.00

BEAM

Item ID	Item Name	Length
B86-03.250-H1AS	5086-H111 AS I-BEAM 3 X 2.411 X 0.250	240.00

SHEET & PLATE

Item ID	Item Name	Width	Length
S14-0.050-0A	2014-O CLAD ALUMINUM SHEET 0.050	48	144
S24-1.250-T35A	2024-T351 CLAD ALUMINUM PLATE 1.250	4.75	51.25
S24-1.500-T35A	2024-T351 CLAD ALUMINUM PLATE 1.500	24	72
S304-0.250-A4	304/304L #4 STAINLESS PLATE 0.250	48	120
S56-0.550-H116	5456-H116 ALUMINUM PLATE 0.500	12	48
S56-0.625-H116	5456-H116 ALUMINUM PLATE 0.625	86	159

ANGLE

Item ID	Item Name	Length
60-5201-A61	6061-T6511 ANGLE MA5343-30 3.250 X 3.250 X 0.250	240.00
A61-100100125-T6	6061-T6511 ANGLE 60C 75C 1.000 X 1.000 X 0.125	120.00
A61-125125125-6E	6061-T6511 ANGLE STRUCTURAL 1.250 X 1.250 X 0.125	240.00
A61-125125125-T6	6061-T6511 ANGLE 60° 4 SC 1.250 X 1.250 X 0.125	240.00
A63-050075062-6E	6063-T52 ANGLE SC 500 X 0.750 X 0.062	240.00
A83-150150188-15	5086-H111 STRUCTURAL ANGLE 1.500 X 1.500 X 0.188	300.00
A86-100100125-15	5086-H111 ANGLE STRUCTURAL 1.000 X 1.000 X 0.125	300.00
A86-125125188-15	5086-H111 STRUCTURAL ANGLE 1.250 X 1.250 X 0.188	240.00
A86-200100188-15	5086-H111 STRUCTURAL ANGLE 2.000 X 1.000 X 0.188	300.00
A86-200150188-15	5086-H111 STRUCTURAL ANGLE 2.000 X 1.500 X 0.188	240.00
A86-200200125-15	5086-H111 STRUCTURAL ANGLE 2.000 X 2.000 X 0.125	300.00

CHANNEL

Item ID	Item Name	Length
C61-200050125-T6	6061-T6511 CHANNEL SC 2.000 X 0.500 X 0.125	240.00
C61-250150125-T6	6061-T6 SC CHANNEL 2.500 X 1.500 X 0.125	288.00
C61-400100115-T6	6061-T6 SC CHANNEL 4 X 1.000 X 0.115	240.00

FLAT BAR

Item ID	Item Name	Length
F61-02500150-6C	6061-T6511 COLD FINISHED FLAT BAR 0.250 X 1.500	144.00
F63-01880150-4C	6063-T4 EXTRUDED FLAT BAR 0.188 X 1.500	192.00
F82-02500300-6E	6082-T6 EXTRUDED FLAT BAR 0.250 X 3.000	240.00
F82-03120300-6E	6082-T6 EXTRUDED FLAT BAR 0.313 X 3.000	240.00
F86-01880150-10	5086-H111 EXTRUDED FLAT BAR 0.188 X 2.000	240.00
FCS-1000200-1020	1020 COLD ROLLED STEEL FLAT BAR 1.000 X 2.000	144.00

ROD

Item ID	Item Name	Length
R52-0.255-OCF	5052-O COLD FINISHED ROD 0.255" DIA	144.00
R54-1.500-H11	5454-H111 EXTRUDED ROD 1.500" DIA	144.00
R61-0.125-T6C	6061-T6 COLD FINISHED ROD 0.125" DIA	144.00
R61-0.188-T6E	6061-T6 COLD FINISHED ROD 0.188" DIA	144.00
R61-0.250-T6C	6061-T6 COLD FINISHED ROD 0.250" DIA	120.00
R61-0.813-T6E	6061-T6511 EXTRUDED	144.00



READY TO SHIP – ORDER TODAY!

Stock is limited. Contact our sales team to check availability and place your order.



866-825-9271



sales@adimetal.com



www.adimetal.com



Fort Lauderdale, FL